



Jay Hesse
President



Ellen Kietzmann
Vice President

The Blue Ox Family

Strong as an Ox so you don't have to be.

Blue Ox has a proud history of designing and crafting quality products that make your life, less complicated and more enjoyable. We back our products with service and attention to detail. Questions? Contact us. We'll be glad to help.

Customer Care Representatives

Available 24/7: 800-228-9289

Blue Ox

One Mill Rd.
P. O. Box 430
Industrial Park
Pender, NE 68047
Phone: 402-385-3051
Email: info@blueox.com

The Blue Ox Family of Products



MOTOR HOME

TruCenter
Enhanced steering and tire blowout safety.



MOTOR HOME

TigerTrak
Eliminates tail wag — superior handling.



MOTOR HOME

Tow Bars
Don't leave your car behind.



MOTOR HOME

SportCarriers
Take your "toys" with you.



FIFTH WHEEL

BedSaver
Prevent damage to your truck and RV.



GOOSENECK TRAILER

Gooseneck hitches
Built Blue Ox® strong with quick and easy ball storage.



TRAILER

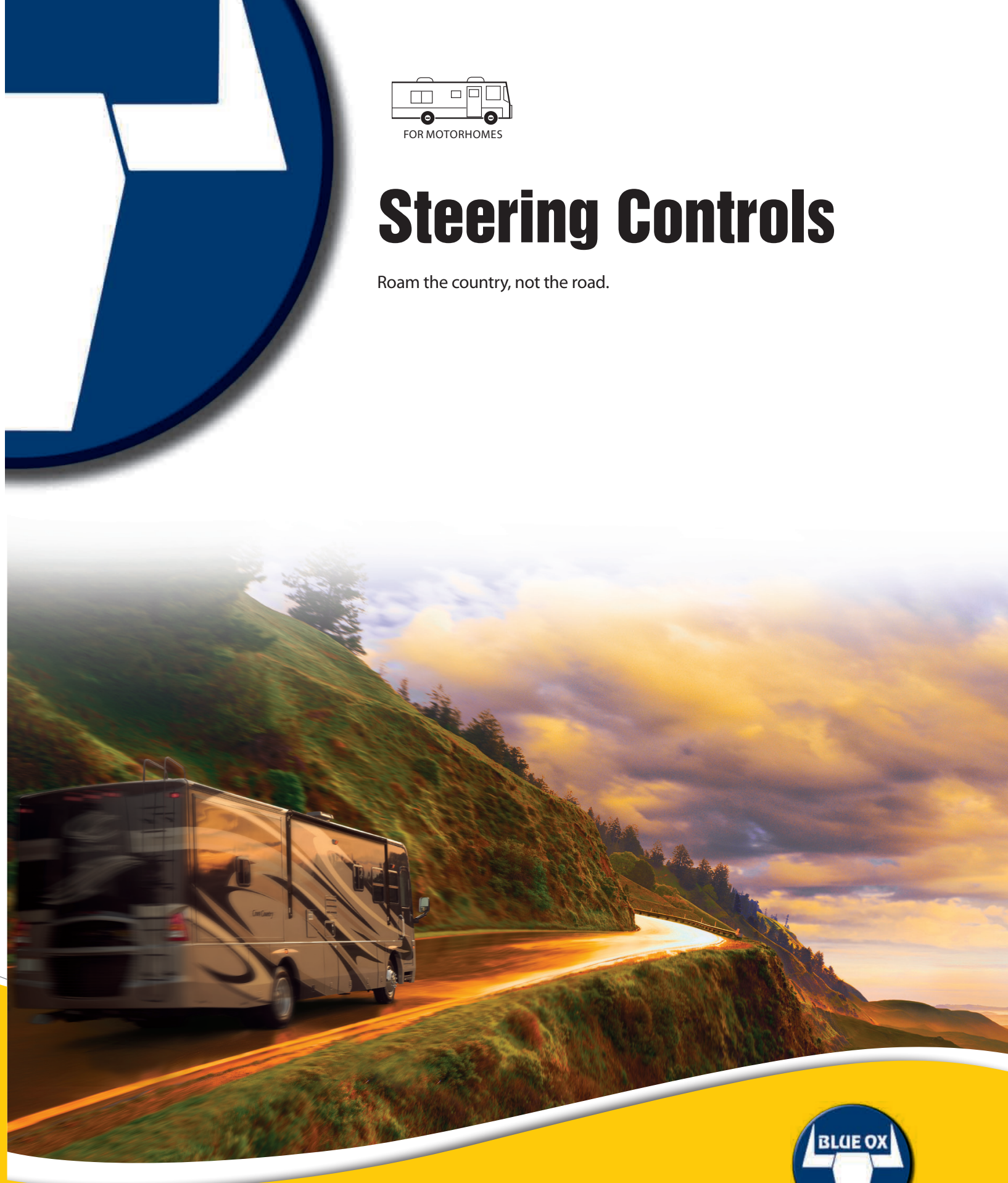
Weight distribution hitches
Control trailer sway and proper weight placement with SwayPro™



FOR MOTORHOMES

Steering Controls

Roam the country, not the road.

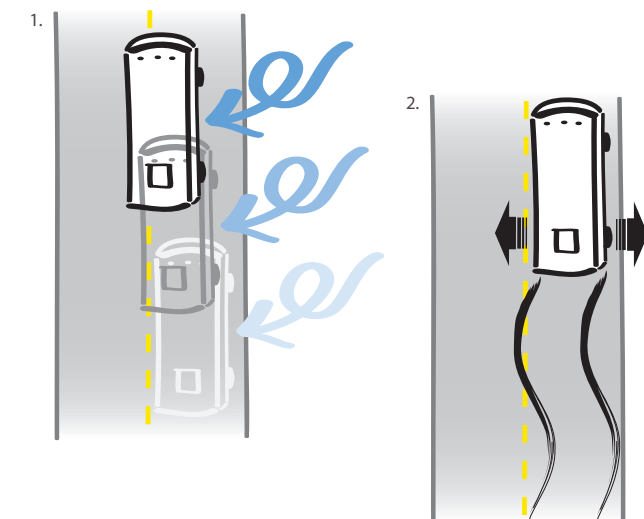


Say goodbye to "white-knuckle" steering and put the fun back into driving.

It's a part of RVing you can do without.

Fighting for control of your steering due to strong crosswinds, uneven pavement or a front-tire blowout, or trying to overcome tail wag in your gas motorhome. To give you more confidence, safety and peace of mind, Blue Ox now offers a full line of steering control products. Forces like strong crosswinds, uneven pavement and a front-tire blowout can push your motorhome off course and into harm's way. TruCenter Steering Control gets you back on track with the touch of a button.

TigerTrak virtually eliminates tail wag caused by the side-to-side movement of the motorhome. Choose either the TruCenter steering control, TigerTrak track bars — or both — and put control back in your hands and enjoyment back into your driving.



Strong As An Ox™



Strong As An Ox™



For more information about quality Blue Ox products, visit www.BlueOx.com

©2012 Blue Ox Printed in USA 05/12 292-6621 Prices and specifications subject to change without notice.

TruCenter

from Blue Ox®



Do you wish your motorhome drove more like your car?

Do you worry about keeping your motorhome under control in the event of a front tire blow out? If you answered yes to any of these questions, the Blue Ox® TruCenter® is the solution for you.

- Convenient push-button activation. Few driving experiences are as unnerving as trying to stay in your lane when there's a buffeting crosswind or uneven pavement. TruCenter® works like a horizontally-mounted shock absorber.

Just push and hold the button, adjust the wheel and let go of the button. The system applies the force needed to keep your motorhome on course. Driving becomes fun once again.

- Easy to adjust. When you need to create a new center position, such as if the winds change, simply push and hold the button, get situated in the lane, and let go of the button. The system works with your steering to get you back on track!

- Stay in control in the event of a blowout. If you've ever had a front-tire blowout, you know the feeling of your rig veering uncontrollably into harm's way. TruCenter® exerts up to 270 pounds of pressure on your steering, keeping the coach on course so you can stop safely.

- Blue Ox® — a name you can trust. Like our other products, TruCenter® is manufactured to the highest industry standards and rigorously tested in real-life situations. It's also easy to install and is transferable. What's more, we back TruCenter® with a one year warranty. So you can depend on it to perform in the most stringent driving conditions for years to come.



TigerTrak

from Blue Ox®



Stops tail wag, improves ride and handling.

If you drive a front engine gas motorhome, you've experienced it all too often — the rear end wagging as the body shifts from side to side. TigerTrak™ from Blue Ox® greatly reduces this tail wag.

- Superior stabilizing track bars. The springs of gas motorhomes often sway from side to side, such as when passing a large vehicle. This is especially true of late-model coaches with long parabolic springs and an extended rear overhang. Situated between the rear axle and the frame, TigerTrak™ allows unhindered up-and-down movement of the springs while virtually eliminating tail wag. So you'll find your coach easier to drive and the ride more enjoyable for everyone.

- Fits most motorhomes. We've created TigerTrak™ units for all Workhorse W Series and P Series chassis, plus Ford F-53, E-350 and E-450 models. There is also a TigerTrak™ built for all Chevy P Series gas chassis and Kodiak truck 4500 and 5500s on the road. So you're sure to find one that fits your motorhome.

- Superior construction, easy installation. TigerTrak™ is made from premium materials including high-strength alloy steel and polyurethane bushings for increased stability. The competition uses hot rolled steel, lighter gauge materials and nuts that are welded on the ends of the tubes for mounting the eyelets. All less expensive and not as strong! Installation is easy, with only basic tools needed. No drilling is required, so your coach and chassis warranties remain intact.

- Blue Ox® — a name you can trust. TigerTrak™ is backed by our three year warranty. So you can purchase a unit with full confidence you'll enjoy superior performance for the long haul.



TruCenter

from Blue Ox®

TigerTrak

from Blue Ox®

PRODUCT DEVELOPMENT

Testing confirms TruCenter will stay in line.

In the year leading up to the release of the new TruCenter, prototypes were subjected to a series of rigorous tests at a leading independent research laboratory. Each round of testing was followed by refinements and improvements such as utilizing new materials and technologies to decrease friction pressure, heat and wear of components.

Then, in lab tests, the new TruCenter surpassed benchmarks for real-life usage, completing up to 12,000 cycles without failure! This was confirmed when the system performed superbly during short and long trips which included fierce crosswinds.

So you can be assured TruCenter will work flawlessly in your coach year after year.

It took a real-life RVer to bring TigerTrak to life.

Ralph and Sharon Andrews had been enjoying full-timing in their 1996 Class A diesel motorhome — except for the coach's excessive tail wag.

So Ralph, a machine shop owner, applied his creative mind to devise a solution. Working with a team of engineers, he used a Panhard rod to connect the axle assembly to the frame. It stopped the side-to-side rear-end sway without affecting the up-and-down movement of the springs.

Ralph patented his invention, trademarked as TigerTrak. Then he and Sharon began selling and installing TigerTrak at RV rallies. As requests came in, Ralph began making TigerTrak for a variety of gas motorhome chassis.

Currently, TigerTrak fits most motorhomes on the road. And Ralph and Sharon are delighted that RVers everywhere can enjoy their experiences without being pushed around by tail wag.

TESTIMONIALS

RVers love regaining control with TruCenter.

"We went through some really strong winds, and normally it would have thrown us around. But we weren't being thrown around this time...when semi trucks would go by, we hardly noticed them."

—Ralph Kuenning, Federal Heights, Colo.
Owner of 2004 Georgetown by Forest River

"You almost couldn't feel the high winds through the steering wheel...with the easy operation, you almost forgot you had TruCenter on."

—Ray Loney, Washougal, Wash.
Owner of 1970 Diplomat by Monac

TigerTrak — all the rave among RVers.

"TigerTrak is great...it improved the ride almost 50 percent...TigerTrak eliminated the majority of the rocking from lane changes or a gust of wind. The improved stability is number one. And it adds no suspension noise. TigerTrak is money well spent."

—Kraig Jorgensen, Moses Lake, Wash.
Owner of 2006 Itasca Sunova by Winnebago

"I felt the difference right away...you don't have to concentrate on the steering wheel movement or hold onto the wheel with both hands at all times anymore. The coach doesn't sway or seem to want to move as much. It handles like a car — not a motorhome. I've had TigerTrak for six years and wouldn't do without it."

—Jae Feilen, Snohomish, Wash.
Owner of a Bounder by Fleetwood