

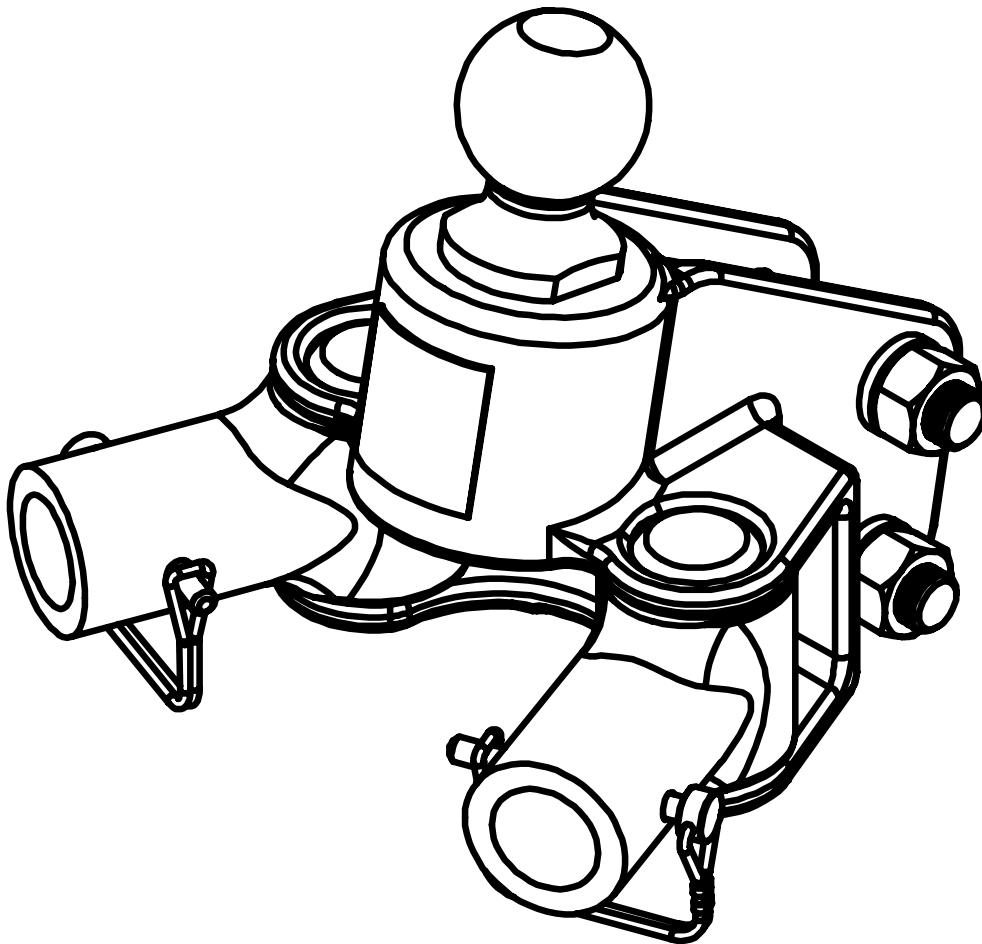


BXW4094 & BXW4095 SwayPro Hitch Head Kit Installation Instructions

⚠ CAUTION

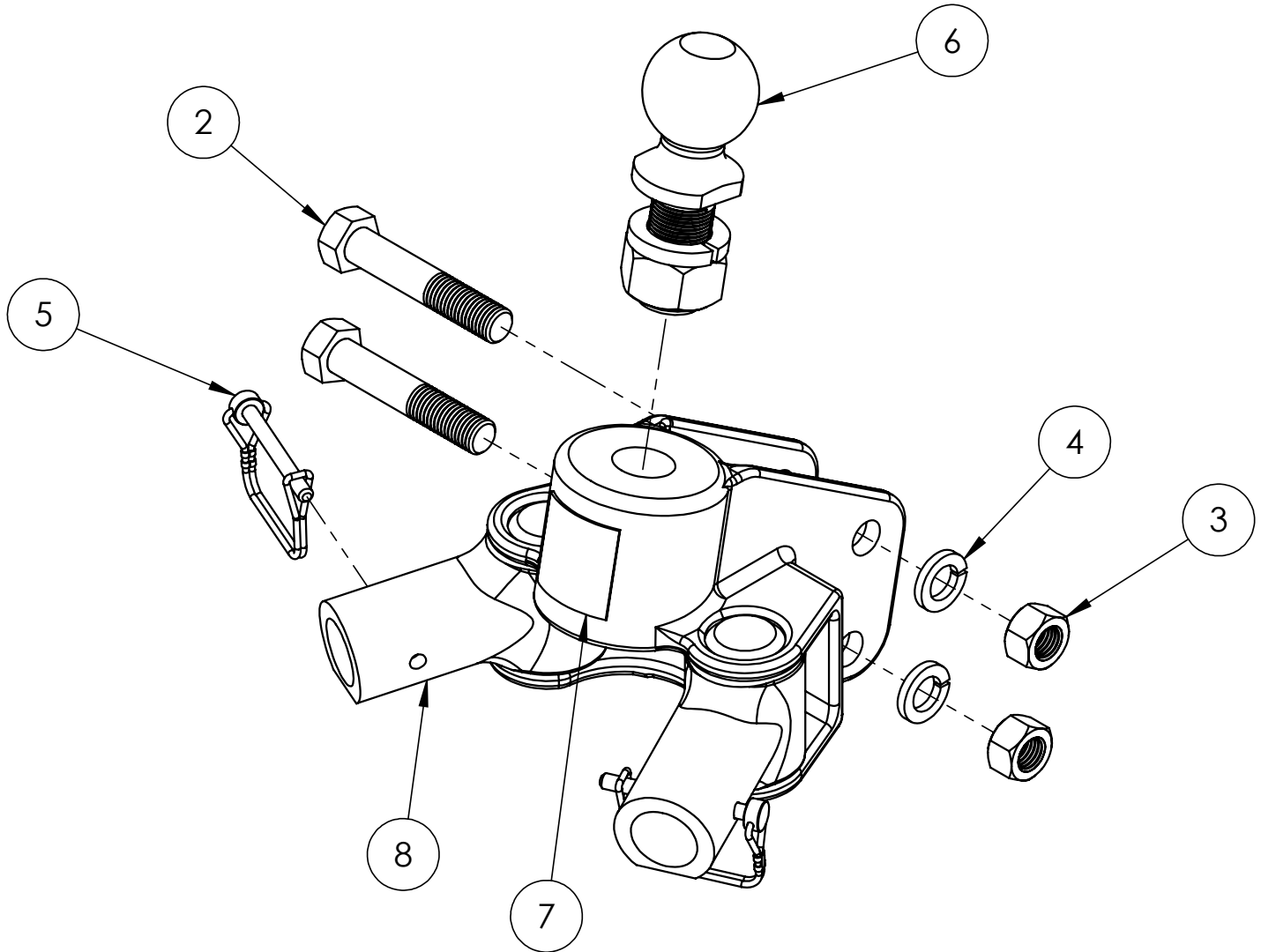
Before installing the SwayPro Hitch Head Kit unhook the trailer from the hitch head. Also remove the assembly bars from the hitch head.

1. Remove the existing hitch head from the receiver hitch mount.
2. Install the new hitch head onto the receiver hitch mount in the previously used location, using the provided 3/4" fasteners. Torque the bolts to 260 ft/lbs.



BXW4094 & BXW4095 SwayPro Hitch Head Kits Installation Instructions

BXW4094 - SwayPro Hitch Head



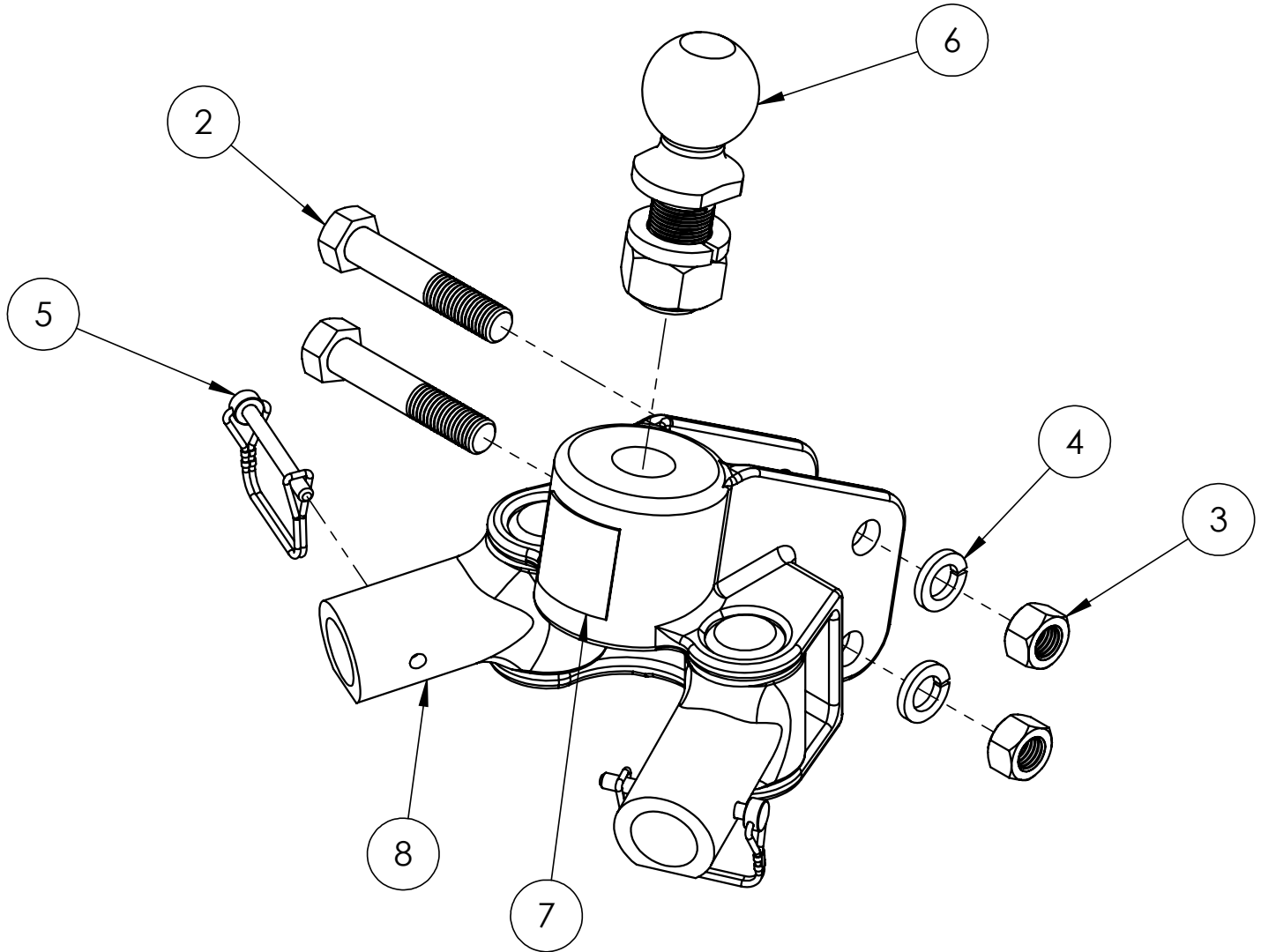
Item No.	Part No.	Description	Qty.
1.....	63-5089(not shown)	Bolt Bag	1
2.....	201-0914	3/4\"-10 x 4\" Hex Bolt, Grade 5, ZP	2
3.....	202-0007	3/4\"-10 Hex Nut, ZP.....	2
4.....	203-0014	3/4\" Lock Washer, ZP	2
5.....	229-0440	5/16\" x 2-1/2\" Eff. Spring Lock Pin.....	2
6.....	229-1200	2-5/16\" x 1-1/4\" Shank Chrome Hitch Ball, 20K	1
7.....	292-7198	Blue Ox Decal	1
8.....	299-0844	Hitch Head.....	1

Important:

Use only genuine factory replacement parts on your hitch receiver. Do **NOT** substitute homemade or non-typical parts. If a bolt is lost or in need of replacement, for your safety and the preservation of your hitch receiver, be sure to use a replacement bolt of the same grade (In most cases it will be Grade 8, please reference the parts list above). Replacement parts may be ordered through your nearest Blue Ox® Dealer or Distributor. Failing to follow and/or altering these installation instructions in either installation or required equipment will void the manufacturer's warranty.

BXW4094 & BXW4095 SwayPro Hitch Head Kits Installation Instructions

BXW4095 - SwayPro Hitch Head, Underslung



Item No.	Part No.	Description	Qty.
1.....	63-5089(not shown)	Bolt Bag	1
2.....	201-0914	3/4\"-10 x 4\" Hex Bolt, Grade 5, ZP	2
3.....	202-0007	3/4\"-10 Hex Nut, ZP	2
4.....	203-0014	3/4\" Lock Washer, ZP	2
5.....	229-0440	5/16\" x 2-1/2\" Eff. Spring Lock Pin.....	2
6.....	229-1200	2-5/16\" x 1-1/4\" Shank Chrome Hitch Ball, 20K	1
7.....	292-7198	Blue Ox Decal	1
8.....	299-0854	Hitch Head	1

Important:

Use only genuine factory replacement parts on your hitch receiver. Do **NOT** substitute homemade or non-typical parts. If a bolt is lost or in need of replacement, for your safety and the preservation of your hitch receiver, be sure to use a replacement bolt of the same grade (In most cases it will be Grade 8, please reference the parts list above). Replacement parts may be ordered through your nearest Blue Ox® Dealer or Distributor. Failing to follow and/or altering these installation instructions in either installation or required equipment will void the manufacturer's warranty.

BXW4094 & BXW4095
SwayPro Hitch Head Kits
Installation Instructions

CUSTOMER SERVICE COMMITMENT

Blue Ox® is committed to providing you with exceptional customer care throughout your lifetime with our products. Our team is here to assist you with any questions you may have regarding the performance of your product. Simply call (402) 385-3051 and you can speak with our customer care team.

Additionally, please visit our website to see which rallies our Destination America team will be attending. For a nominal fee, our service technician will service your towing system to ensure it's in proper working condition. Also, as a commitment to our customers, should you visit our factory, you can stay at our full service Blue Ox® campground at no charge along with enjoying a factory tour.

Again, thank you for being our customer and for the confidence you have shown in the performance of our products. It is because of customers like you we enjoy the success we have today.



© 2024 Blue Ox
One Mill Road, Industrial Park
Pender, Nebraska 68047
Phone: (402) 385-3051
Fax: (402) 385-3360
www.blueox.com