

Please read **BOTH** these Installation Instructions and the General Towing Instructions before attempting to install or operate this equipment.

1. Blue Ox® towing products and accessories are intended to be installed by Blue Ox® Dealers who are familiar with our products and have the equipment and knowledge to do “fit work.” Blue Ox® Dealers can be found at www.blueox.com or by contacting our Customer Care Department at (402) 385-3051.

Attachment Tab Height: 18 1/4”
Attachment Tab Width: 22”

2. Many Blue Ox® Baseplates are designed to use existing holes and hardware to mount the baseplate to the towed vehicle. Even though bolts are there, do not assume they are adequate for baseplate mounting. Always use hardware supplied in the hardware kit or existing hardware specified in the Baseplate Towing Installation Instructions.

Bolt Torque Specifications

Torque in Foot-Pounds for Metric Bolts

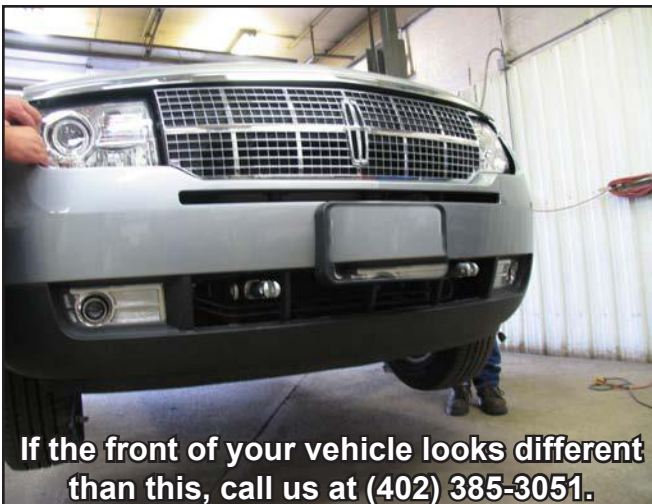
Bolt Size	Grade 8.8	Grade 10.9
6MM	6	8
8MM	16	22
10MM	31	40
12MM	54	70
14MM	89	117

Confirm the towability and pre-towing procedures for your vehicle with the owner’s manual or contact the vehicle’s manufacturer for specific towing procedures.

Bolt Torque Specifications

Torque in Foot-Pounds for Inch Bolts

Bolt Size	Grade 5	Grade 8
1/4”	10	14
5/16”	19	29
3/8”	33	47
7/16”	54	78
1/2”	78	119
5/8”	154	230



! WARNING

Failure to read and follow these instructions could result in separation of the towed vehicle from the tow bar, causing property damage, loss of towed vehicle, personal injury or death.

BX2192

2007-10 Lincoln MKX

Installation Instructions

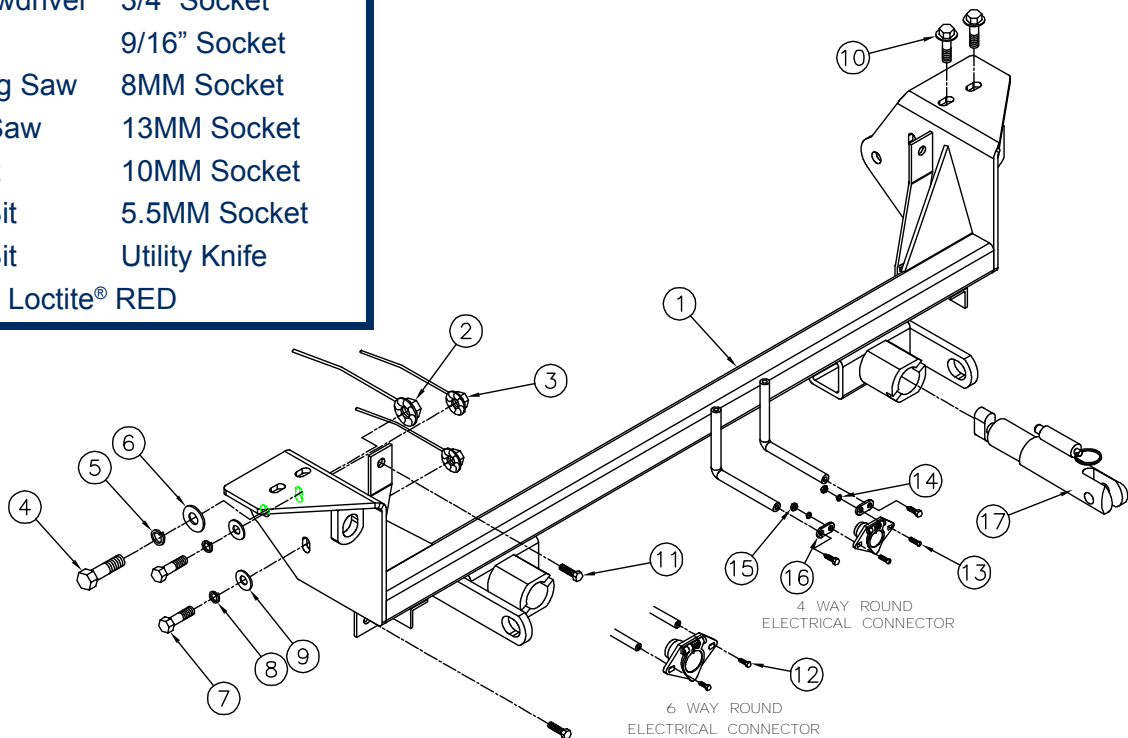
Parts List

Ref. No.	Qty.	Part #	Description
1	1	61-6392	Weldment, Baseplate, BX2192
2	2	61-4029	Weldment, 1/2" Nut Wire
3	4	61-4978	3/8" Whiz Nut, w/14" Wire
4	2	201-0060	1/2-13x1" Hex Bolt, Grd. 5, ZP
5	2	203-0012	1/2" Lock Washer, ZP
6	2	203-0005	1/2" Flat Washer, ZP
7	4	201-0443	3/8-16x1" Hex Bolt, Grd. 5, ZP
8	4	203-0010	3/8" Lock Washer, ZP
9	4	203-0003	3/8" Flat Washer, ZP
10	4		Existing bolts for bumper mount
11	4		Existing bolts for cross member
12	2	201-0979	#12-14 x 1" Self Drilling Screw, ZP
13	2	201-0192	#10-32x1/2" Slot, Round Head Screw
14	2	203-0054	#10 Lock Washer
15	2	202-0047	#10-32 Hex Nut
16	2	101-5822	Adapter, 4 Way Connector
17	2	62-3468	Attachment, Assembly, SF/SB, 1 Hole
	2	201-0050	1/4-20 x 3/4 Hex Bolt, Grd 5., ZP (Not Shown)
	2	202-0069	1/4-20 Hex Flange Whiz Lock Nut, ZP (Not Shown)
	2	290-0437	Cap Plug, Black (Not Shown)
	2	229-0359	Quicklink, 3/8", ZP (Not Shown)
	2	226-0046	Baseplate Safety Cable, 36" Class III (Not Shown)

Tools Required

Phillips Screwdriver	3/4" Socket
Hammer	9/16" Socket
Reciprocating Saw	8MM Socket
1 1/4" Hole Saw	13MM Socket
9/32" Drill Bit	10MM Socket
13/32" Drill Bit	5.5MM Socket
17/32" Drill Bit	Utility Knife

Loctite® RED



Important:

Use only genuine factory replacement parts on your baseplate. Do **NOT** substitute homemade or non-typical parts. If a bolt is lost or in need of replacement, for your safety and the preservation of your baseplate, be sure to use a replacement bolt of the same grade (In most cases it will be Grade 5, please reference the parts list above). Replacement parts may be ordered through your nearest Blue Ox® Dealer or Distributor. Failing to follow and/or altering these installation instructions in either installation or required equipment will void the manufacturer's warranty. Towing behind a non-motorized vehicle will void the warranty.

BX2192

2007-10 Lincoln MKX

Installation Instructions

Vehicle Weight:

Motorhome mount tow bars are recommended for use with this baseplate. Due to the design of the removable tabs, the RangeFinderII, Adventurer, and Ambassador tow bars can not be used. The Acclaim tow bar may be used, but will not fold and store on the front of the vehicle. Adapters, except the BX8833 and BX88151, can not be used with this baseplate.

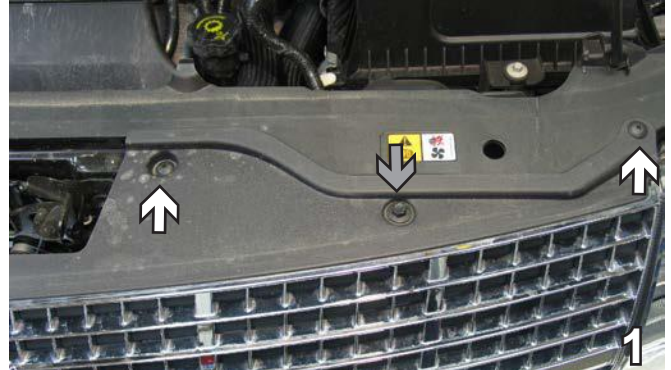
Installation Notes: The fascia and water reservoir are removed and reinstalled during installation of the baseplate. Drilling is required. Trimming of the fascia is required.

The dimensional variations between otherwise identical vehicles can be considerable. While the baseplate was designed for easy installation, it may be necessary to tailor the baseplate slightly to compensate for auto manufacturer's tolerances. These minor adjustments may include filing a hole slightly, bending electrical rods or bending end plates.

The BX8869 Bulb & Socket Wiring Kit is recommended for both the 2007-08 models.



Installation Instructions:



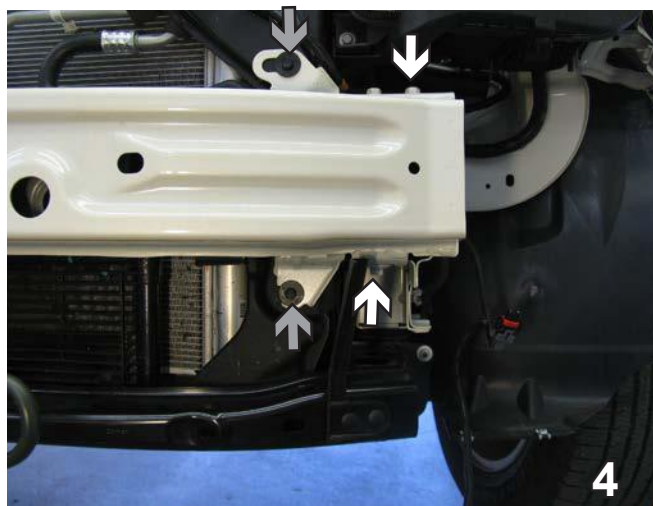
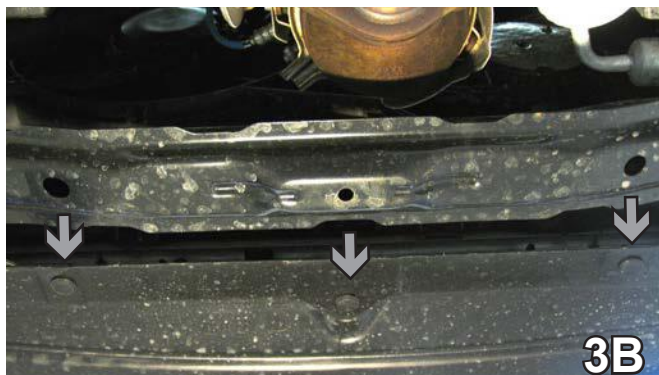
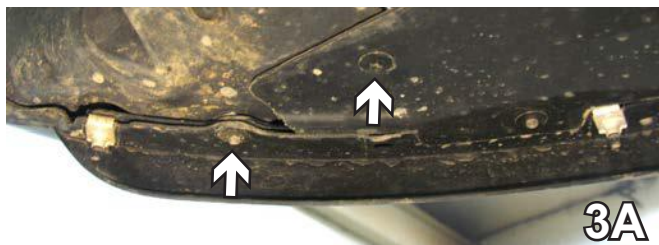
1. Using a Phillips screwdriver, remove two plastic Phillips push pins (see white arrows) and then using a 10MM socket, remove one metric bolt (see grey arrow) from the flat plastic piece just above grille. Do this to both sides of the vehicle. Set bolts and push pins aside to be reinstalled later.



2. Using a 5.5MM socket, remove three metric bolts just forward of the front tire on the wheel well. Do this to both sides of the vehicle. Set bolts and push pins aside to be reinstalled later.

Handling of some cosmetic parts when installing this product may require the use of protective covers, rags, specialty tools, etc. to prevent damage.

BX2192
2007-10 Lincoln MKX
Installation Instructions



- Using a 5.5MM socket, remove two metric bolts from underneath the front edge of fascia (see white arrows). Do this to both sides of the vehicle. Then using a flat screwdriver, remove three push pins that are located in the center of vehicle on the belly pan (see grey arrows). Set bolts and push pins aside to be reinstalled later. After all the bolts and push pins are removed, the corner of fascia is then pulled out to the side and forward to remove. Set fascia aside carefully to be reinstalled later.

- Using a 13MM socket, remove two metric bolts from the top of the metal bumper and one metric bolt from the bottom (see white arrows). These black 6MM bolts (gray arrows) support the radiator carriage. Be sure to mark the height on carriage to the top of frame rail before removing bolts. This will alter hood latch height determining proper hood closure. Then using a 10MM socket, remove one metric bolt from the top and bottom of the bumper (see grey arrows).

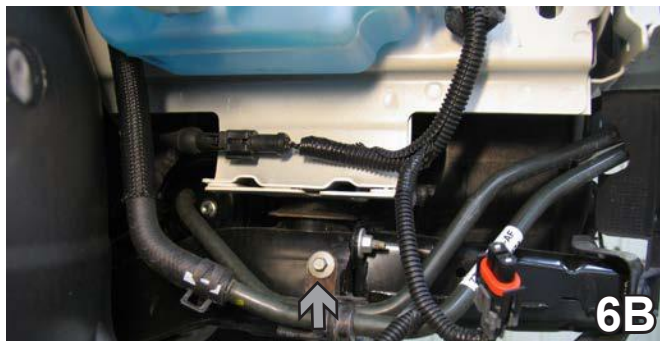
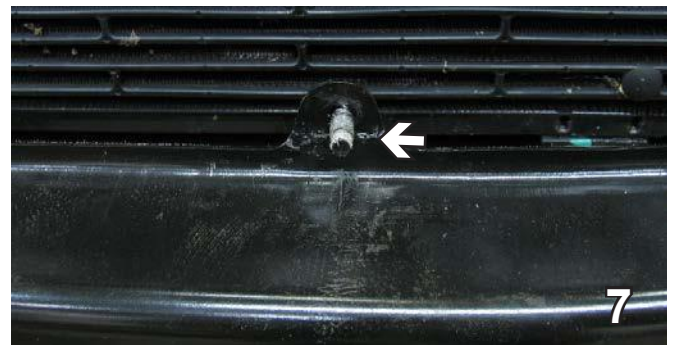
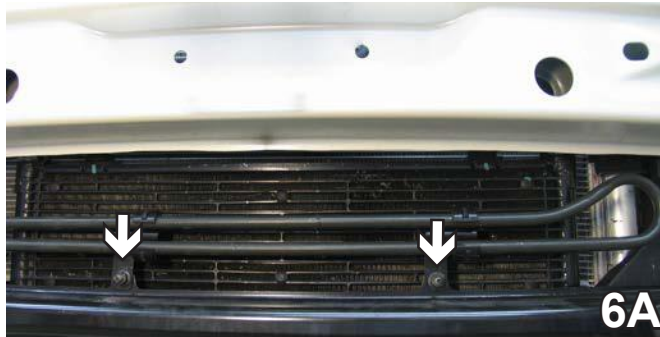
NOTE: These black 6MM bolts (grey arrows) support radiator carriage. Be sure to mark the height on carriage to top of frame rail before removing bolts. This will alter hood latch height, determining proper hood closure.



Do this to both sides of the vehicle. Set bolts aside to be reinstalled later. The metal bumper will not be reinstalled on vehicle is on and should be returned to customer.

- You will need to flatten the top of the frame rail a couple times with a hammer until level. You can use a straight edge as a guide. Do this to both sides of the vehicle.

BX2192
2007-10 Lincoln MKX
Installation Instructions



7. Using a reciprocating saw, cut off the tabs that the lower coolant line was attached to. Be careful not to cut into radiator. Use bracket as template and drill with a 9/32" drill bit into the top of the cross member. Bolt coolant brackets to the top of cross member using the 1/4" x 3/4" hex bolt and 1/4" whiz nut with the 7/16" socket. Do this to both brackets.

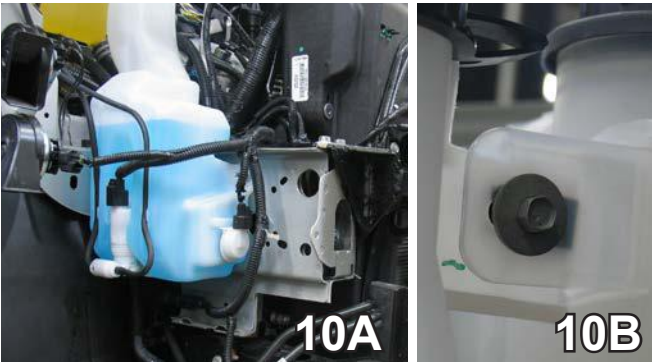
6. Using a 10MM socket, remove two metric bolts from the lower coolant line located on the front of the vehicle. Then using a 8MM socket, remove one metric bolt located on the passenger side of the vehicle for the lower coolant line. Set bolt aside to be reinstalled later and discard the Hex nuts, because the coolant line will be mounted in a new location.



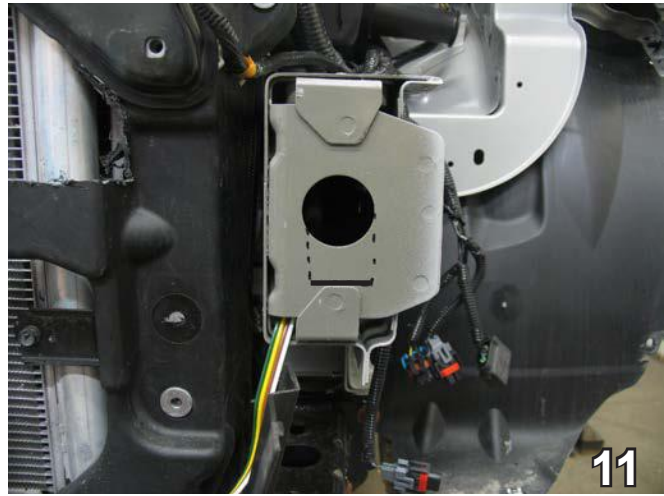
8. Take a tape measure and measure one inch up from the bottom of the mounting tabs located on the coolant line and make a mark. Take a vise grips and bend both tabs back towards to radiator.

9. Remove coolant line brackets on the back side and relocate to the front of the coolant line. Using the bracket as a template, drill into lower cross member and install 1/4-20 x 3/4" hex bolt and whiz nut on the back side of the cross member. Do this to both sides.

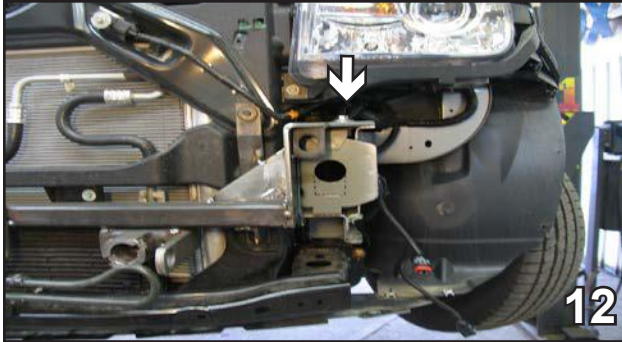
BX2192
2007-10 Lincoln MKX
Installation Instructions



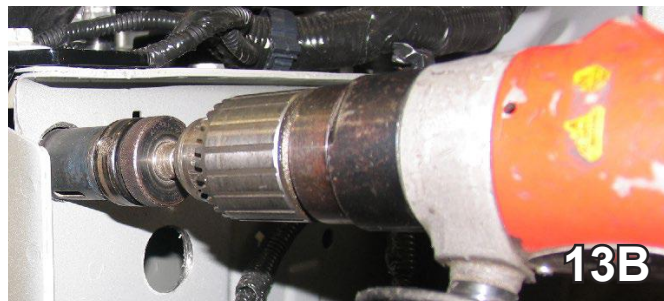
10. The water reservoir on the passenger's side will need to be removed from the passenger side of the vehicle by removing the three metric bolts with the 10MM and 8MM socket. Set water reservoir and bolts aside to be reinstalled later.



11. Using a reciprocating saw, make the two vertical cuts and bend the cut area into the frame end and as far down as possible. Do this to both sides of the vehicle.



12. Place baseplate on top of frame and line up the holes in the baseplate with the two existing holes on top of the frame. Insert one existing 13MM bolt removed in step 6, to hold baseplate into place with the 13MM socket. Do this to both sides of the vehicle.

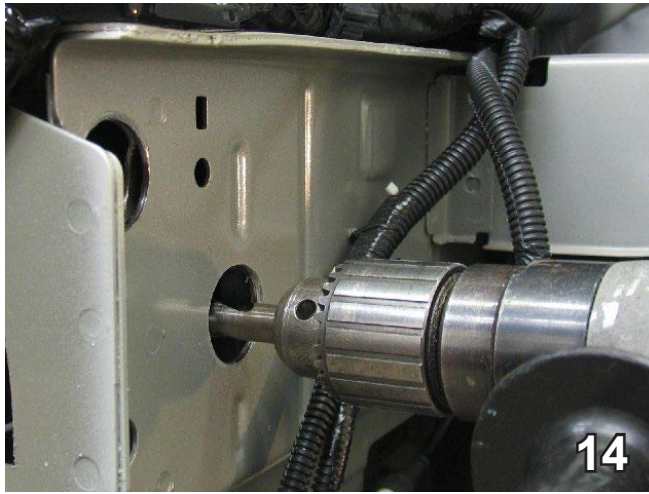


13. Using a 1 1/4" hole saw, drill two 1 1/4" holes into the frame, utilizing the two existing holes in the side of the frame so an extension can be used to tighten up bolts. Do this to both sides of the vehicle.

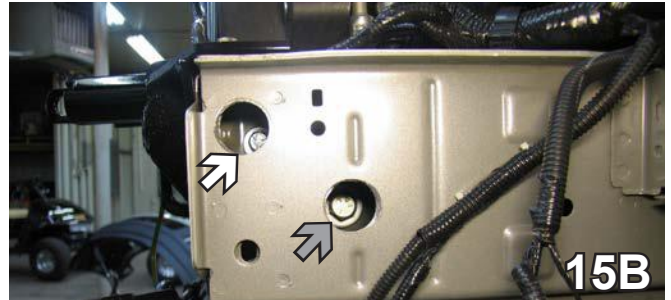
BE SURE TO USE LOCTITE® RED ON ALL BOLTS BEFORE TIGHTENING. TIGHTEN ALL BOLTS ACCORDING TO THE TORQUE CHART ON THE FRONT PAGE OF THESE INSTRUCTIONS OR ON PAGE 3 OF THE BASEPLATE TOWING GENERAL INSTRUCTIONS.

When using power drills be aware of the dangers of torque and drill bit length.

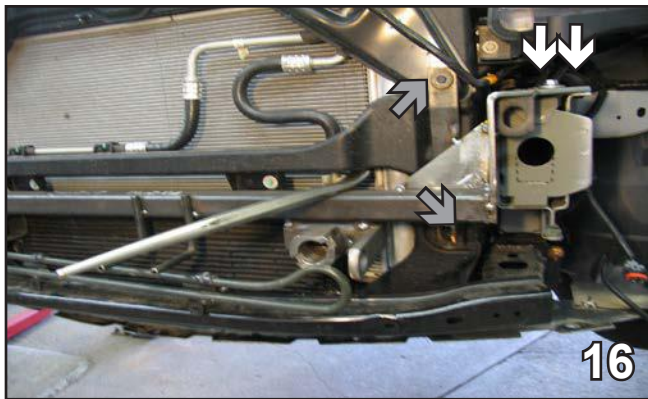
BX2192
2007-10 Lincoln MKX
Installation Instructions



14. Align lower base plate holes to existing holes. Should meet but may need to be reamed out using 13/32" and 17/32" drill bit. Do to both sides of the vehicle.

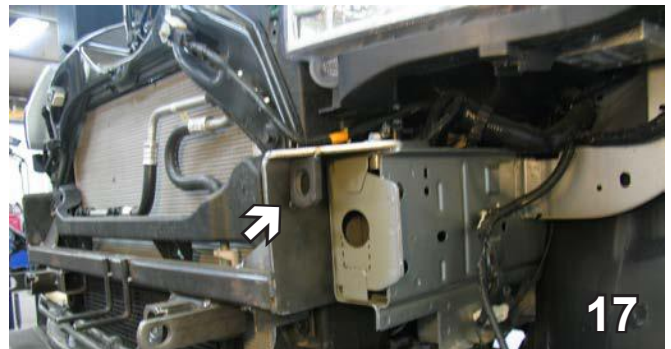


15. Using the baseplate as a template, insert a 3/8-16x1" hex bolt, 3/8" lock washer and 3/8" flat washer into the two outside holes and tighten down with a 3/8-16 whiz nut w/14" wire (see white arrows). You will then insert a 1/2-13x1" hex bolt, 1/2" lock washer and 1/2" flat washer and tighten down with a 1/2" nut plate (see grey arrow). Do this to both sides of the vehicle.



16. After the bolts in Step 15 are installed, you can reinstall the top two 13MM bolts removed in Step 4 (see white arrows) and also the two 10MM bolts removed in Step 6, to hold radiator support back in place (see grey arrows). Do this to both sides of the vehicle.

NOTE: BE SURE TO ADJUST THE HEIGHT OF RADIATOR CARRIAGE (REFER TO STEP 4)



17. Attach the permanent baseplate safety cables to the provided convenience link on the baseplate (see grey arrow). The photo above shows the recommended installation of the cables to frame of vehicle (see white arrow). Additional options may interfere with suggested mounting; in this case secure the cables to a solid piece of the frame as described in the instructions included with the permanent baseplate safety cables. Be sure the safety cables do not rub against any hoses or moving parts. Do this to both sides of the vehicle.

BX2192
2007-10 Lincoln MKX
Installation Instructions

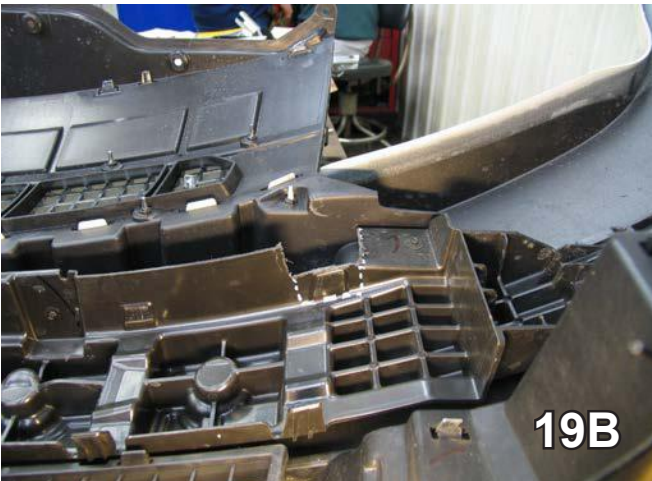


18. Using a hack saw blade, trim off tab located on the back side of the fascia. Do this to both sides of the vehicle.



19. Using a hack saw blade, trim away plastic areas located on the back side of the fascia, just above the fascia opening as indicated in photos 19A, 19B and 19C. Do this to both sides of the fascia.

19A. Measure 2 1/2" back and along the baseline of the plastic and all the way around. Mark and trim.



19B. Fascia shown after step 18A is completed and the additional bit of plastic towards the webbing is removed.



19C. Measure another 1/2" outwards, mark and trim.

Be sure that **ALL** electrical connections are plugged in properly and functioning **BEFORE** installing the fascia.

20. Reinstall washer reservoir and fascia to original positions.

BX2192

2007-10 Lincoln MKX

Installation Instructions

Install the tow bar and safety cables according to the instructions provided in their packages. When demonstrating this to the customer, be sure to include all the contents and packages.

Do **NOT** substitute other devices if the tow bar pins and clips are misplaced.

DEALER or INSTALLER:
Be certain the user receives the instruction sheets for their products.

CUSTOMER SERVICE COMMITMENT



2007 Shown with removable tabs installed.



2008 Shown without removable tabs installed.

Blue Ox is committed to providing you with exceptional customer care throughout your lifetime with our products. Our team is here to assist you with any questions you may have regarding the performance of your product. Simply call (402) 385-3051 and you can speak with our customer care team.

Additionally, please visit our website to see which rallies our Destination America team will be attending. For a nominal fee, our service technician will service your towing system to ensure it's in proper working condition. Also as a commitment to our customers, should you visit our factory you can stay at our full service Blue Ox campground at no charge along with enjoying a factory tour.

Again thank you for being our customer and for the confidence you have shown in the performance of our products. It is because of customers like you we enjoy the success we have today.

If the baseplate is in an accident, it must be replaced. **DO NOT** use it again! An accident can cause unseen damage and using it again could result in more damage or serious injury. **DO NOT** use the baseplate if it is damaged or missing parts.



© 2007, 08, 09, 10 Blue Ox
One Mill Road, Industrial Park
Pender, Nebraska 68047
Phone: (402) 385-3051 • Fax: (402) 385-3360
www.blueox.com

General Information

1. Ensure that your product(s) are registered online at www.blueox.com. It is crucial to register your product(s) so that you may be alerted of product offerings, updates, upgrades, maintenance and safety bulletins, and/or recalls.
2. **It is the owner's responsibility to inspect all towing equipment for cracked welds, missing or worn parts and loose bolts before each towing trip.** Be sure to use Loctite® Red on all bolts and tighten to the recommended specifications.
3. **It is the owner's responsibility to hook up all towing equipment per manufacturer's instructions/recommendations.**
4. Remove the attachment tabs when not in use (if applicable).

Notice To Baseplate Installer

1. It is YOUR responsibility to watch for:

- Oil cooler and air conditioner lines
- Electrical wires and hoses
- Missing parts or attaching points on the frame

** If the baseplate is improperly installed and is against a wire or hose, it could cause fluid leaks or electrical shorts some time after the actual baseplate installation.

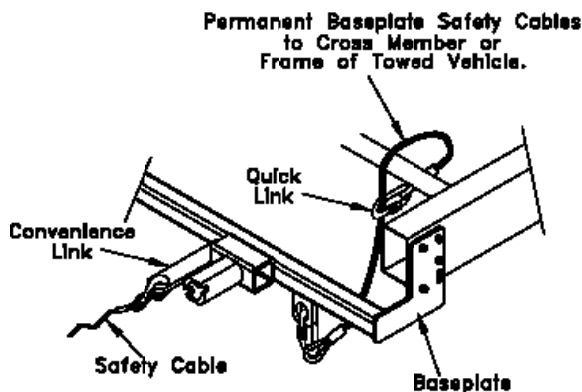
Permanent Baseplate Safety Cable Installation

Permanent baseplate safety cables are strongly recommended when towing a vehicle with a tow bar. The principle function of the permanent baseplate safety cables is to prevent the towed vehicle from breaking loose in the event the connection between the frame of the towed vehicle and the baseplate fails or becomes disconnected. The cables must be connected from the baseplate to the frame rail or cross member of the vehicle's frame. The illustrations below show the possible arrangements recommended by Blue Ox®. Each permanent baseplate safety cable must have an adequate weight rating for the towing system. The weight rating of the two (2) cables together will not qualify.

Do not mount the permanent baseplate safety cables against wires, hoses or brake lines.

These permanent baseplate safety cables should remain installed as long as the baseplate is installed on the vehicle. Permanent baseplate safety cables are to be used in conjunction with, and NOT a replacement for legally required safety cables attaching the towed vehicle to the towing vehicle.

OPTION #1



OPTION #2

