



# BX2166

2002-03 Ford Explorer Sport (w/o Tow Hooks)  
2004-05 Ford Explorer Sport  
2001-03 Ford Explorer Sport Trac (w/o Tow Hooks)  
2004-05 Ford Explorer Sport Trac

## Installation Instructions

Serial Number

Attachment Tab Height: 19-1/2"

Attachment Tab Width: 18"

Please read BOTH these Installation Instructions and the General Instructions prior to installing or operating this equipment.

- Blue Ox® towing products and accessories are intended to be installed by Blue Ox® Dealers who are familiar with our products and have the equipment and knowledge necessary to do "fit work". If needed, Blue Ox® Dealers can be found at [www.blueox.com](http://www.blueox.com) or by contacting our Customer Care Department at (402) 385-3051.
- Many Blue Ox® baseplates are designed to use existing holes and hardware to mount the baseplate to the towed vehicle. Even though bolts are there, do not assume they are adequate for baseplate mounting. Always use the hardware supplied in the hardware kit and existing hardware as specified in the installation instructions.


**Bolt Torque Specifications**  
Torque in Foot-Pounds for Metric Bolts

Bolt Size	Grade 8.8	Grade 10.9
6MM	6	8
8MM	16	22
10MM	31	40
12MM	54	70
14MM	89	117

**Bolt Torque Specifications**  
Torque in Foot-Pounds for Inch Bolts

Bolt Size	Grade 5	Grade 8
1/4"	10	14
5/16"	19	29
3/8"	33	47
7/16"	54	78
1/2"	78	119
5/8"	154	230

**Reference your vehicle owner's manual for manufacturer's towing specifications.**

 **WARNING**

Failure to read and follow these instructions could result in separation of the towed vehicle from the tow bar, causing property damage, loss of towed vehicle, personal injury or death.

**BX2166**  
2002-03 Ford Explorer Sport (w/o Tow Hooks)  
2004-05 Ford Explorer Sport  
2001-03 Ford Explorer Sport Trac (w/o Tow Hooks)  
2004-05 Ford Explorer Sport Trac

**Instruction Notes:** The towhooks are removed for the baseplate installation. Some drilling and trimming is required.

Place all components that are removed on a flat, sturdy surface. All items will be reinstalled unless otherwise noted after the baseplate is installed.

The dimensional variations between otherwise identical vehicles can be considerable. While the baseplate was designed for easy installation, it may be necessary to tailor the baseplate slightly to compensate for vehicle manufacturer's tolerances.

The BX8869 Tail Light Wiring Kit is recommended for this vehicle.

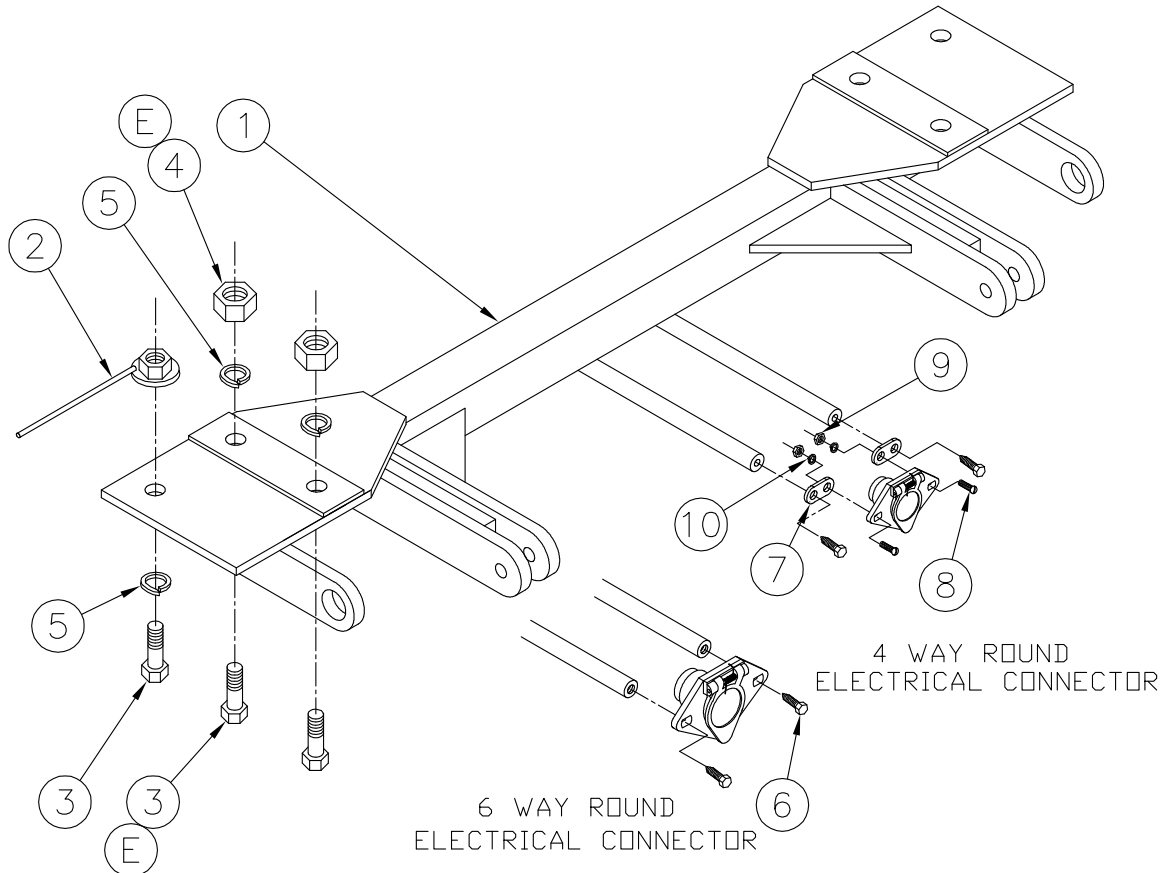
## ***NOTICE***

- Handling of some cosmetic parts when installing this product may require the use of protective covers, rags, specialty tools, etc. to prevent damage.
- When using power drills be aware of the dangers of torque and drill bit length.
- When using a reciprocating saw be aware of objects behind the cutting surface.
- Use a good quality paint to spray cut edges of frame to prevent rusting.
- Be sure that **ALL** electrical connections are plugged in and accessories are functioning properly before reinstalling the fascia.
- Do not use the towed vehicle for storing luggage, equipment, etc. This may cause you to exceed the towing capacity of the tow bar, baseplate and its accessories.
- Be sure to use Loctite® Red on all bolts before tightening. Tighten all bolts according to the torque chart provided.
- Dealer or installer be certain the user receives these instruction sheet.
- If the baseplate is in an accident, it must be replaced. **DO NOT** use it again! An accident can cause unseen damage and using it again could result in more damage or serious injury. **DO NOT** use the baseplate if it is damaged or missing parts.

**BX2166**  
 2002-03 Ford Explorer Sport (w/o Tow Hooks)  
 2004-05 Ford Explorer Sport  
 2001-03 Ford Explorer Sport Trac (w/o Tow Hooks)  
 2004-05 Ford Explorer Sport Trac

**Tools Required**

Torque Wrench  
 Drill  
 Loctite® RED  
 17/32" Drill Bit  
 8MM Socket  
 10MM Socket  
 15MM Socket  
 3/4" Socket



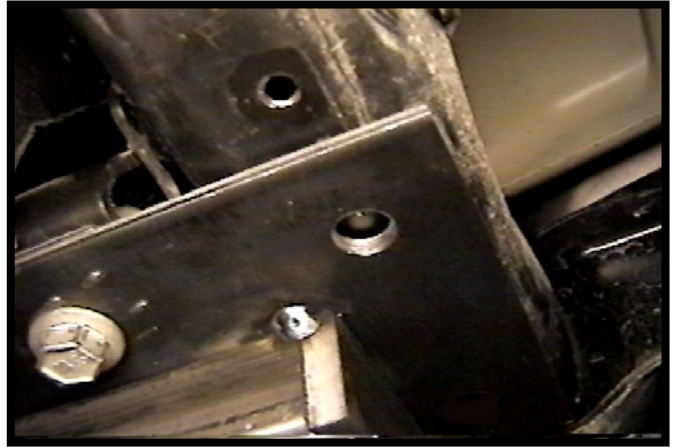
Item No.	Part No.	Description	Qty.
1.....	61-5888.....	BX2166 Baseplate.....	1
2.....	61-4029.....	1/2" Nut Wire.....	2
3.....	201-0051.....	1/2"-13 x 1-1/2" Hex Head Bolt, Grade 5, ZP.....	6
4.....	202-0005.....	1/2"-13 Hex Nut, ZP.....	4
5.....	203-0012.....	1/2" Lock Washer, ZP.....	6
6.....	201-0553.....	1/4-20 x 1/2" Hex Wshd Bolt Type F TCS, ZP.....	2
7.....	101-5822.....	4 Way Connector Adapter.....	2
8.....	202-0047.....	#10-32 Hex Nut.....	2
9.....	201-0192.....	#10-32 1/2" Round Slotted Head Screw.....	2
10.....	203-0054.....	#10 Lock Washer, ZP.....	2
11.....	226-0049(not shown).....	Class IV Safety Cables.....	2
12.....	229-0512(not shown).....	1/2" Quicklink, ZP.....	4
E.....	Existing.....	When tow hooks are on vehicle, use existing bolts & nut plates	

**Important:**

Use only genuine factory replacement parts on your baseplate. Do **NOT** substitute homemade or non-typical parts. If a bolt is lost or in need of replacement, for your safety and the preservation of your baseplate, be sure to use a replacement bolt of the same grade (In most cases it will be Grade 5, please reference the parts list above). Replacement parts may be ordered through your nearest Blue Ox® Dealer or Distributor. Failing to follow and/or altering these installation instructions in either installation or required equipment will void the manufacturer's warranty. Towing behind a non-motorized vehicle will void the warranty.

## BX2166

2002-03 Ford Explorer Sport (w/o Tow Hooks)  
2004-05 Ford Explorer Sport  
2001-03 Ford Explorer Sport Trac (w/o Tow Hooks)  
2004-05 Ford Explorer Sport Trac



1. Remove the metric bolts from the belly pan with 8MM & 10MM sockets (5 total). If the vehicle has tow hooks, take both off, slide the baseplate up in position and bolt it to the frame with the existing four (4) 15MM bolts and two (2) nutplates. If the vehicle does not have tow hooks, use the four 1/2"-13 x 1-1/2" hex bolts, nuts, and lock washers (items 3, 4 and 5).
2. Using the baseplate as a template, drill the two (2) holes on the outside of the baseplate into the bottom of the frame with the 17/32" drill bit, one on each side. Using the remaining 1/2"-13 x 1-1/2" hex bolts, 1/2" lock washer and 1/2" wire nuts (items 2, 3 and 5), finish bolting the baseplate to the frame.  
**Note:** There are slots on the outside of the tube to feed the wire nuts into.
3. With all nuts and bolts tightened with loctite and torqued correctly, replace the belly pan and tighten all metric bolts.
4. Attach the permanent baseplate safety cables to the provided convenience link on the baseplate. Additional options may interfere with suggested mounting; in this case, secure the cables to a solid piece of the frame as described in the instructions included with the permanent baseplate safety cables. Be sure the safety cables do not rub against any hoses or moving parts. Do this on **BOTH** sides of the vehicle.

### CUSTOMER SERVICE COMMITMENT

Blue Ox® is committed to providing you with exceptional customer care throughout your lifetime with our products. Our team is here to assist you with any questions you may have regarding the performance of your product. Simply call (402) 385-3051 and you can speak with our customer care team.

Additionally, please visit our website to see which rallies our Destination America team will be attending. For a nominal fee, our service technician will service your towing system to ensure it's in proper working condition. Also, as a commitment to our customers, should you visit our factory, you can stay at our full service Blue Ox® campground at no charge along with enjoying a factory tour.

Again, thank you for being our customer and for the confidence you have shown in the performance of our products. It is because of customers like you we enjoy the success we have today.

© 2012 Blue Ox  
One Mill Road, Industrial Park  
Pender, Nebraska 68047  
Phone: (402) 385-3051  
Fax: (402) 385-3360  
www.blueox.com