

### Parts List

2	Running board
2	Mounting bracket, front
2	Mounting bracket, middle
2	Mounting bracket, rear
2	T-bolt, 70mm tab
8	T-bolt, 48mm tab
2	T-bolt, 42mm tab
12	Flat washer, 10mm
12	Lock washer, 10mm
12	Hex nut, 10mm
12	Bolt retainer, plastic

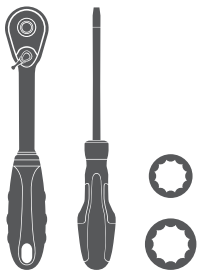
### Additional Hardware\*

12	Hex bolt, 8mm
12	Flat washer, 8mm
12	Lock washer, 8mm
12	Hex nut, 8mm

\* Running boards are supplied with additional hardware. Quantities listed are in addition to the standard supplied hardware.

### Tools Required

Ratchet	Socket, 13mm
Flathead screwdriver	Socket, 17mm



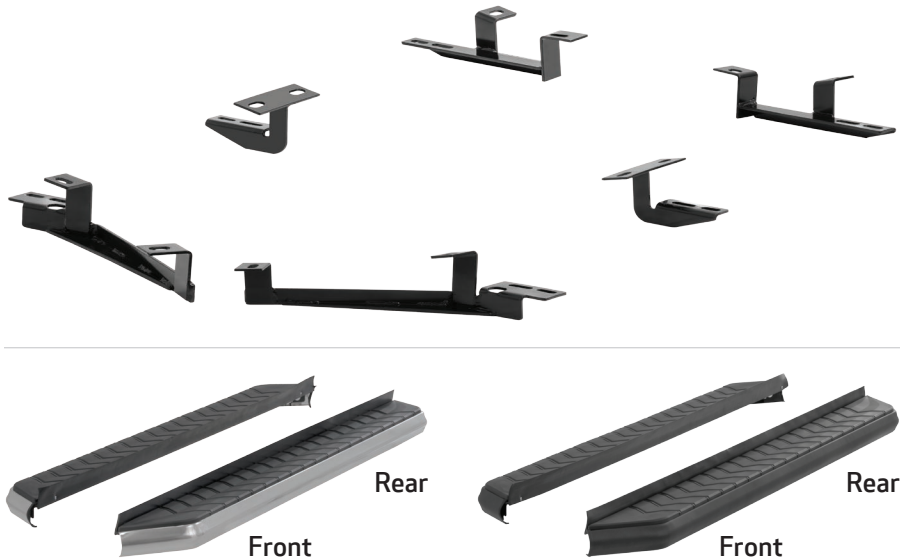
### Level of Difficulty

Easy



Scan for helpful install tips

### Product Image



### Notes and Maintenance

Before you begin installation, read all instructions thoroughly.

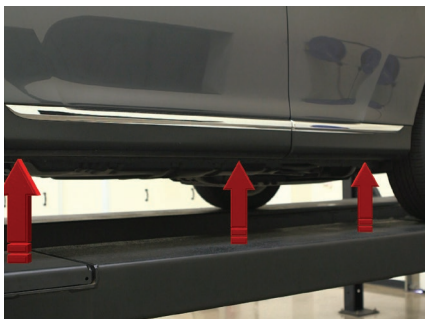
Proper tools will improve the quality of installation and reduce the time required.

To protect the product, wax after installing. Regular waxing is recommended to add a protective layer over the finish. Do not use any type of polish or wax that may contain abrasives that could damage the finish.

For stainless steel, polish may be used to clear small scratches and scuffs on the finish. Mild soap may be used also to clean the product.

### Step 1

Starting on the driver side, locate the three mounting locations on the inside of the rocker panel. Locate the front bracket for the driver side.



### Step 2

Locate the hole plug on the front driver side rocker panel and remove it with a flathead screwdriver.



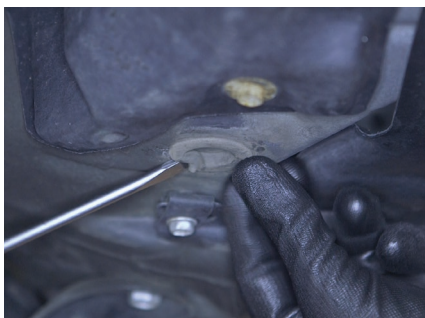
### Step 3

Place a 48mm tab T-bolt into the round hole. Place a plastic retainer on the stud of the T-bolt to prevent it from falling inside the vehicle body panel.



### Step 4

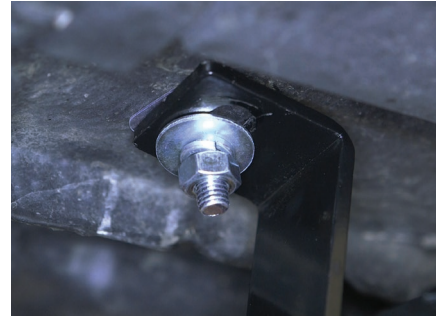
Remove the plug from the front frame mount location and install a 42mm tab T-bolt and use a plastic retainer to hold it in place.



### Step 5

Place the front driver side bracket onto the vehicle and secure with two 10mm hex nuts, two 10 mm lock washers and two 10mm flat washers.

Snug the hardware, but do not fully tighten.



### Step 6

Locate the two plugs for the middle bracket location and remove them with a flathead screwdriver.



### Step 7

Insert two 48mm tab T-bolts into the round holes and use plastic retainers to hold them in place.

Place the middle bracket onto the vehicle and secure with two 10mm hex nuts, two 10mm lock washers and two 10mm flat washers.

Snug the hardware, but do not fully tighten.



### Step 8

Remove the plug for the rear bracket rocker panel mount location and install a 48mm tab T-bolt and plastic retainer.



### Step 9

Install a 70mm tab T-bolt into the rear bracket frame mount location and hold it in place with a plastic retainer.



### Step 10

Place the rear bracket onto the vehicle and secure with two 10mm hex nuts, two 10mm lock washers and two 10mm flat washers.

Snug the hardware, but do not fully tighten.



### Step 11

Remove the 8mm nuts, 8mm lock washers and 8mm flat washers from the running board.

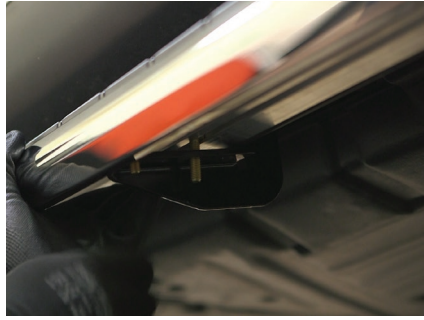
Place the running board onto the brackets and align the 8mm bolts with the slots in the brackets on the vehicle.



### Step 12

Attach the running board to the brackets using six 8mm bolts, six 8mm nuts, six 8mm lock washers and six 8mm flat washers.

Snug the hardware, but do not fully tighten.



### Step 13

Adjust the running board, centering it between the front and rear wheel wells.

Tighten all hardware on the running boards and brackets.



### Step 14

Repeat steps 1 through 13 on the passenger side of the vehicle.

Congratulations on the installation of your brand new ARIES AeroTread™ running boards.

With the running boards installed, periodic inspections should be performed to ensure all mounting hardware remains tight.

To protect your investment, we recommend you apply a layer of nonabrasive wax.

